

ENCLOSURE MODEL: 400T-AL

JOB:

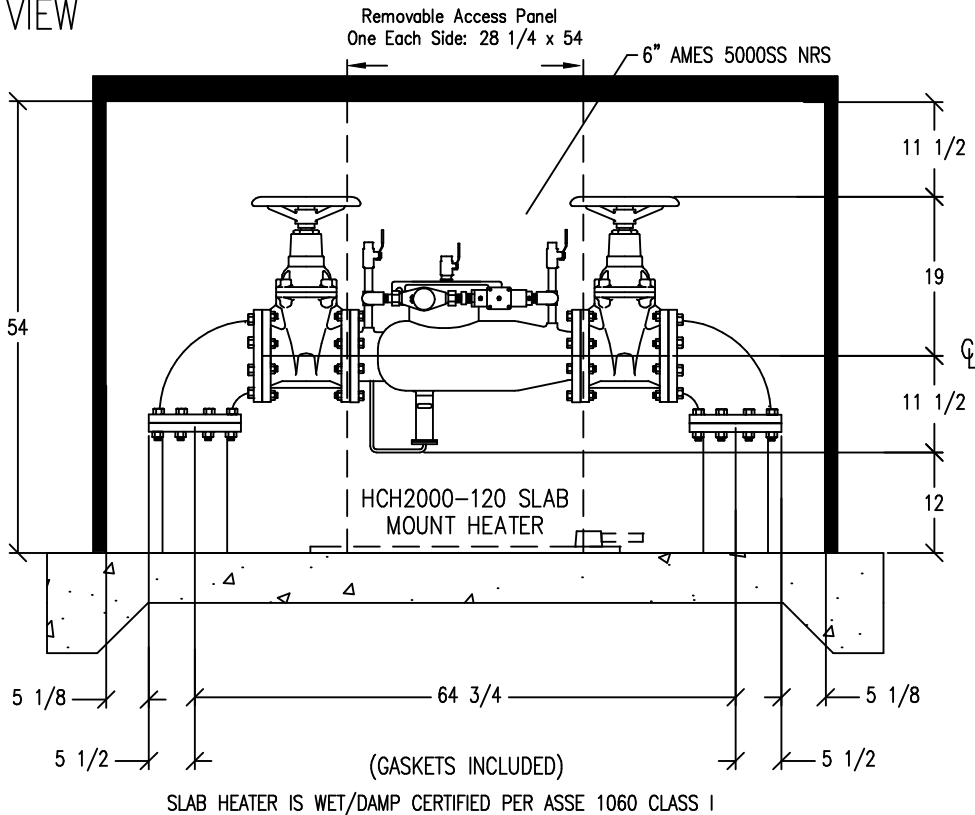
Drawn By: PP Scale: NONE Date: 7-10-13

SAFE-T-COVER

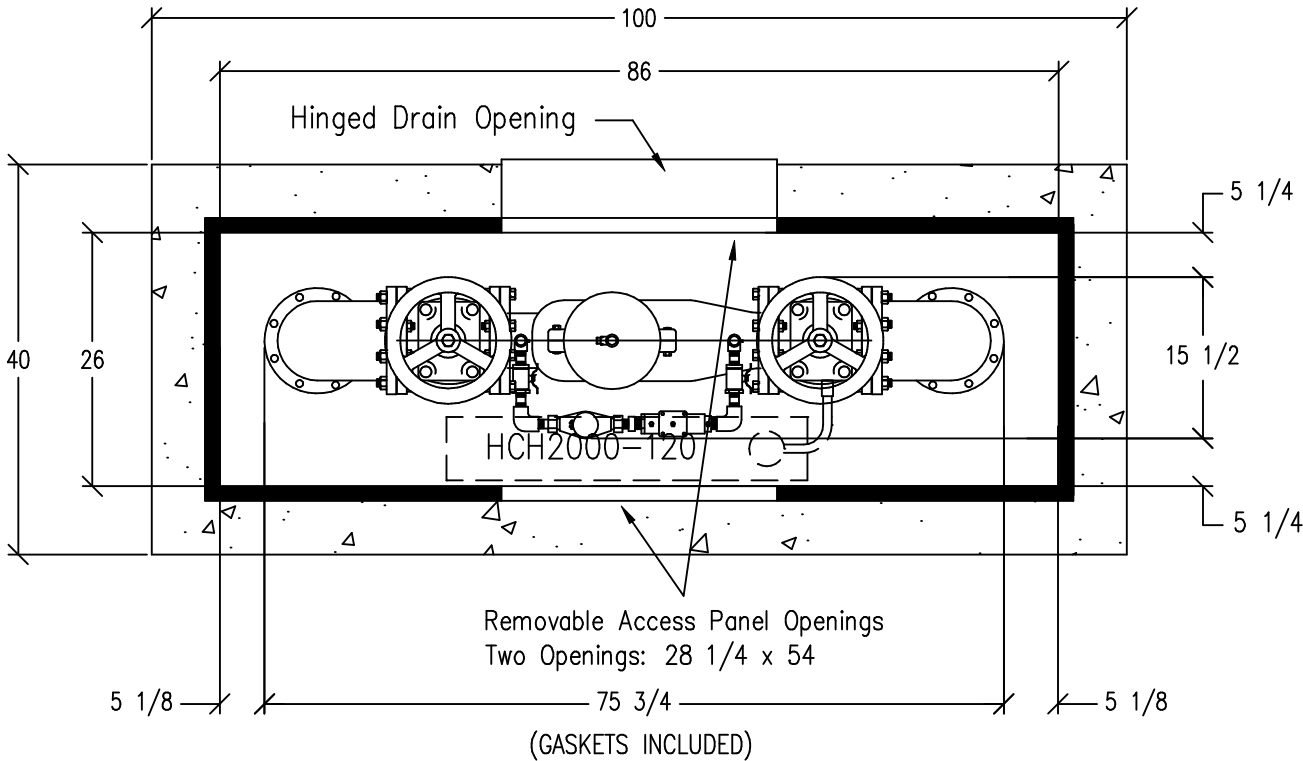
BY: HYDROCOWL

2710 LANDERS AVENUE, NASHVILLE, TN 37211
615-259-4495, 800-245-6333, 615-259-4481 FAX

ELEVATION VIEW



PLAN VIEW



6AM5000SS-NRS12

Sheet 1 of 1

1. Drawing NOT TO SCALE.
2. BFP dimensions furnished by AMES
3. All dimensions are in inches.
4. Wall and insulation thickness is 1-1/2".
5. Roof and insulation thickness is 3".
6. MODEL 400T-AL ENCLOSURE.
7. Enclosure inside dimensions:
26"W x 86"L x 54"H
8. Concrete pad is 40"W x 100"L
9. BFP- 6" AMES 5000SS NRS

CONFIDENTIAL: This drawing is intended for use only by those authorized to receive it. Dissemination, distribution or copy of this information is strictly prohibited.