

ENCLOSURE MODEL: 300-AL

JOB:

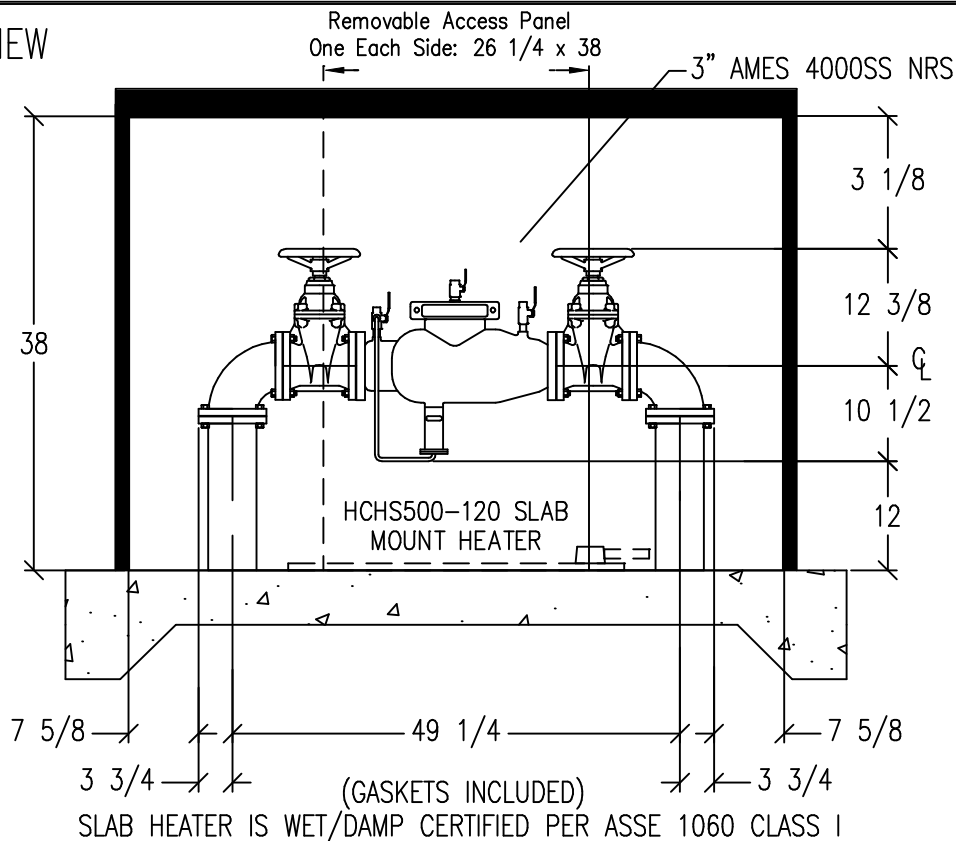
Drawn By: PP Scale: NONE Date: 8-14-13

**SAFE-T-COVER**

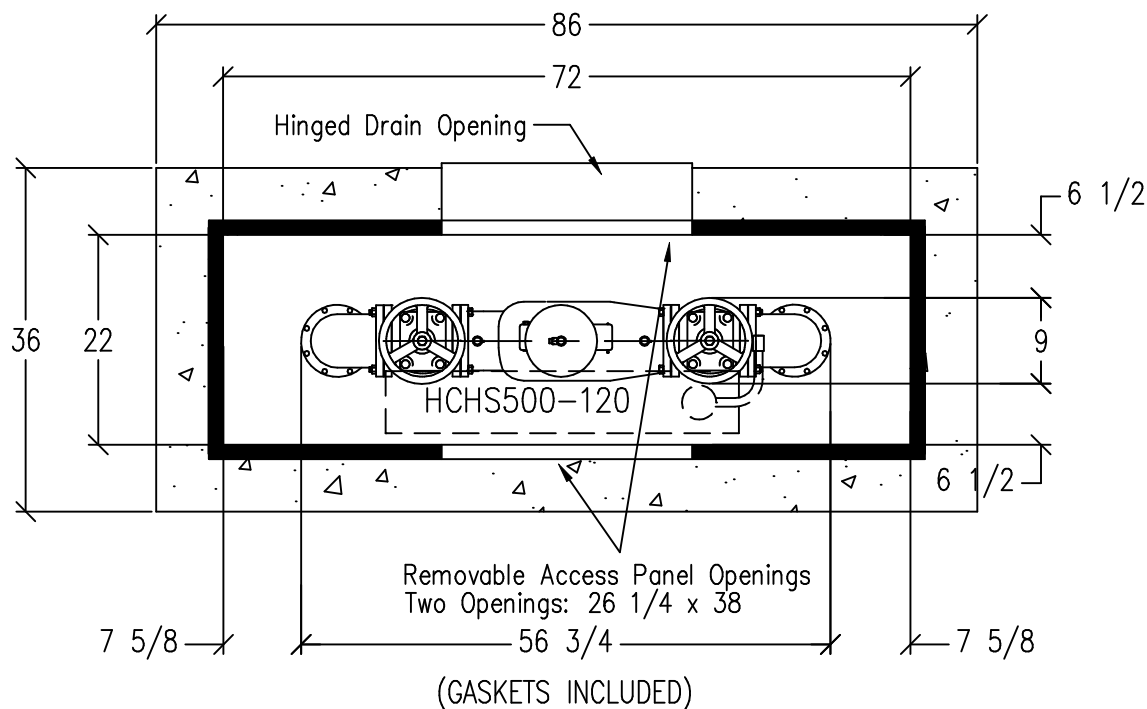
BY: HYDROCOWL

2710 LANDERS AVENUE, NASHVILLE, TN 37211  
615-259-4495, 800-245-6333, 615-259-4481 FAX

## ELEVATION VIEW



## PLAN VIEW



3AM4000SS-NRS12

Sheet 1 of 1

6. MODEL 300-AL ENCLOSURE.

7. Enclosure inside dimensions:  
22"W x 72"L x 38"H

8. Concrete pad is 36"W x 86"L

9. BFP- 3" AMES 4000SS NRS

1. Drawing NOT TO SCALE.

2. BFP dimensions furnished by AMES

3. All dimensions are in inches.

4. Wall and insulation thickness is 1-1/2".

5. Roof and insulation thickness is 3".

CONFIDENTIAL: This drawing is intended for use only by those authorized to receive it. Dissemination, distribution or copy of this information is strictly prohibited.