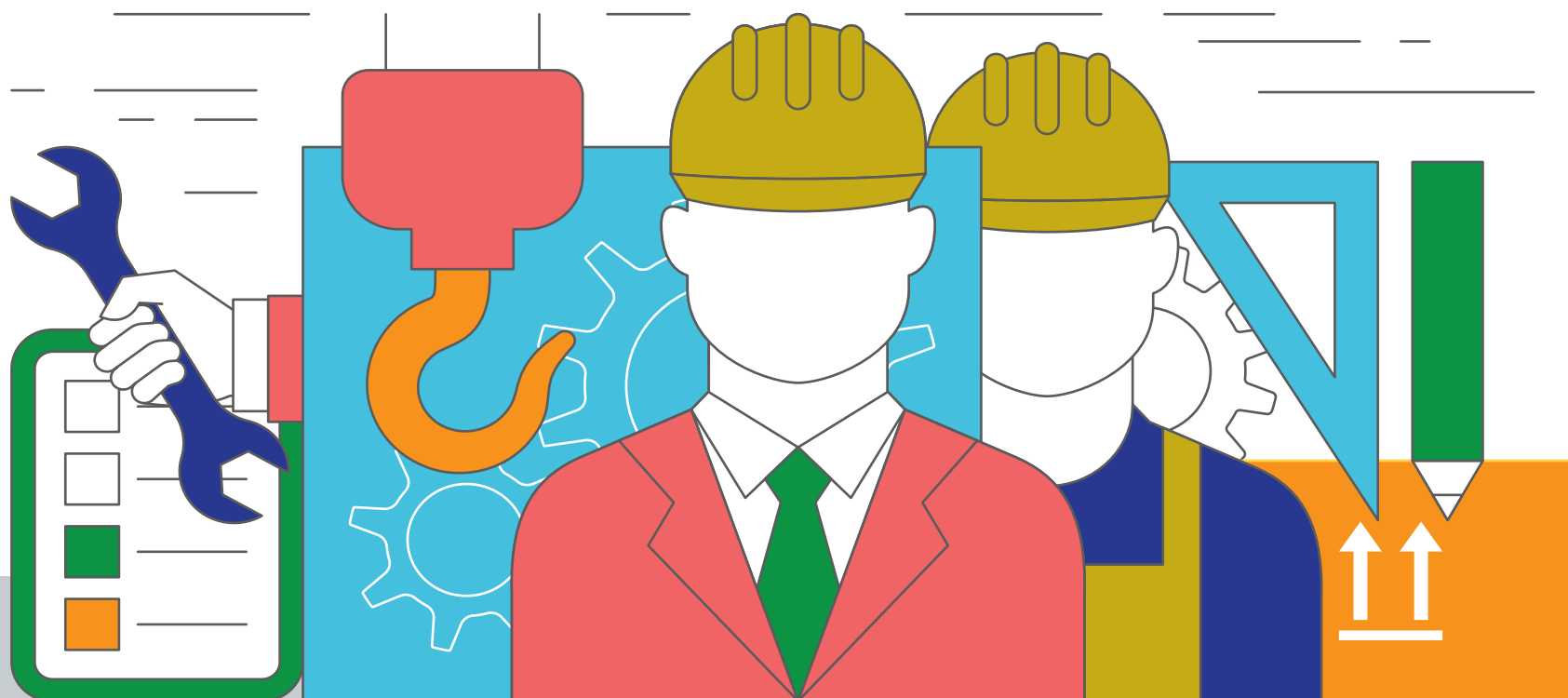


LOST IN THE VAULT

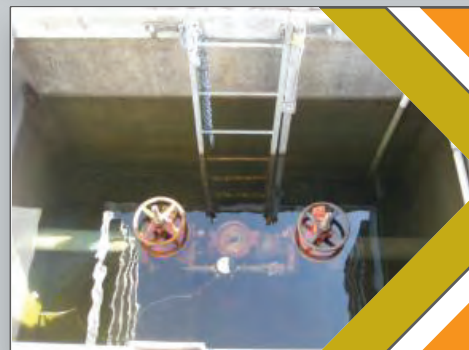


WHEN THERE'S KNOWN RISK IS IT REALLY "BEST PRACTICE"?



THE BOTTOM LINE

"When a backflow preventer is installed below grade, the vault or pit in which an assembly is installed may fill up with water ...The water in the pit could create a cross-connection between the water in the pit and the backflow preventer through the test cocks. **This may occur whether the test cocks are open or closed.**" - USC FCCCHR, *Cross Talk*, Spring 2014



TAKING A RISK

Cross connections lead to backflow. Backflow leads to contaminated drinking water. Contaminated drinking water leads to sickness and death. Over the last two years Corpus Christi has had **4 contaminated drinking water events**. Mismanagement of the water system has unacceptable consequences.



WHAT'S THE REALITY?

When the test cocks are under water a potential cross connection is created. Respected voice in the industry - USC FCCCHR has written guidance urging against placing backflow preventers in vaults **THREE TIMES**.



THIS IS NOT SAFE

Flood water includes things such as fertilizers, animal waste and transmits many diseases including cholera and giardia. **3.4 MILLION deaths** annually from water related diseases globally. In the United States about 800 deaths are related to norovirus and 7,900 are related to Clostridium difficile each year. **These are only two of many types of water borne disease.**



CHANGE IS OK

Do you still use floppy disks, VHS or cassette tapes? How many people do you know that still have a corded home phone? When was the last time you drafted plans by hand instead of using AUTOCad? It's ok that these once important skills and objects are no longer necessary. Things change, people learn, and we improve. **Let's improve on the vault.**



THE SOLUTION

Install the backflow preventer above ground in an ASSE 1060 approved enclosure. **Don't render the backflow device useless by creating a cross connection at it.** Keep it above ground and safe from everyday flooding. Hide them with colors and landscaping to address any aesthetic concerns. Visit www.safe-t-cover.com for ASSE 1060 enclosure information.