

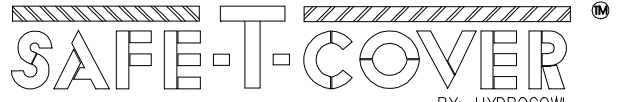
ENCLOSURE MODEL: 800T-AL

JOB:

Drawn By: MW

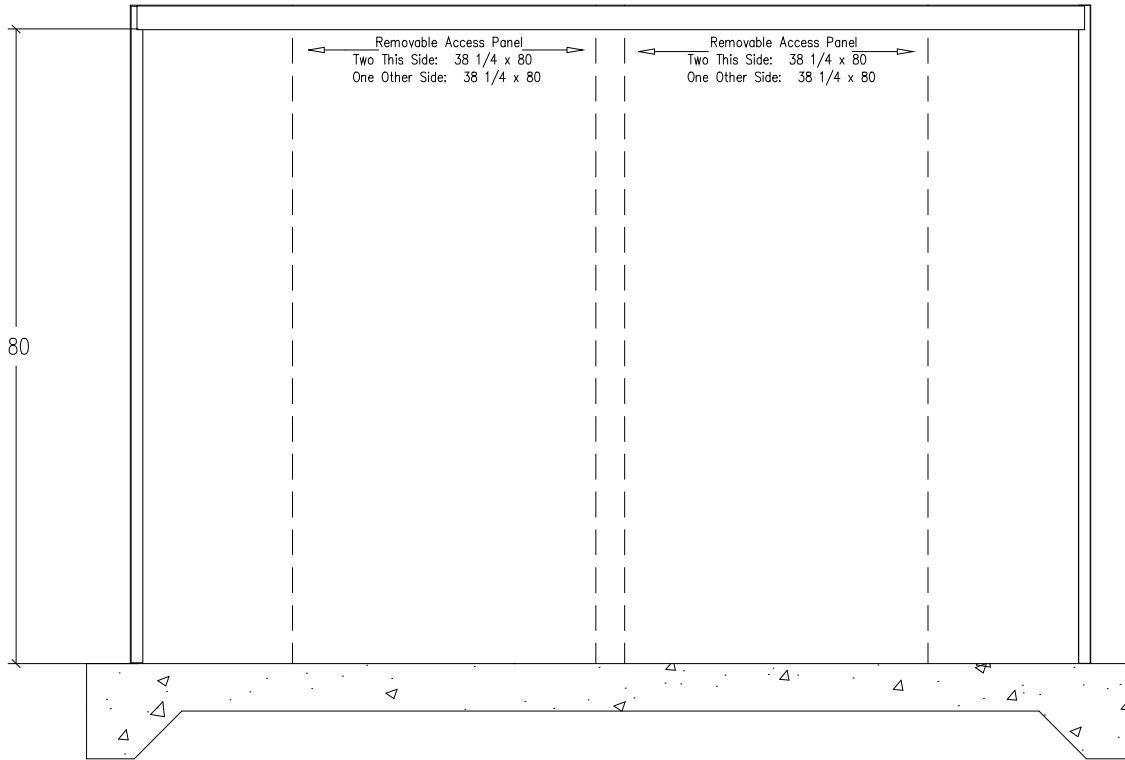
Scale: NONE

Date:



BY: HYDROCOWL
213 CRUTCHFIELD AVENUE, NASHVILLE, TN 37210
615-259-4495, 800-245-6333, 615-259-4481 FAX

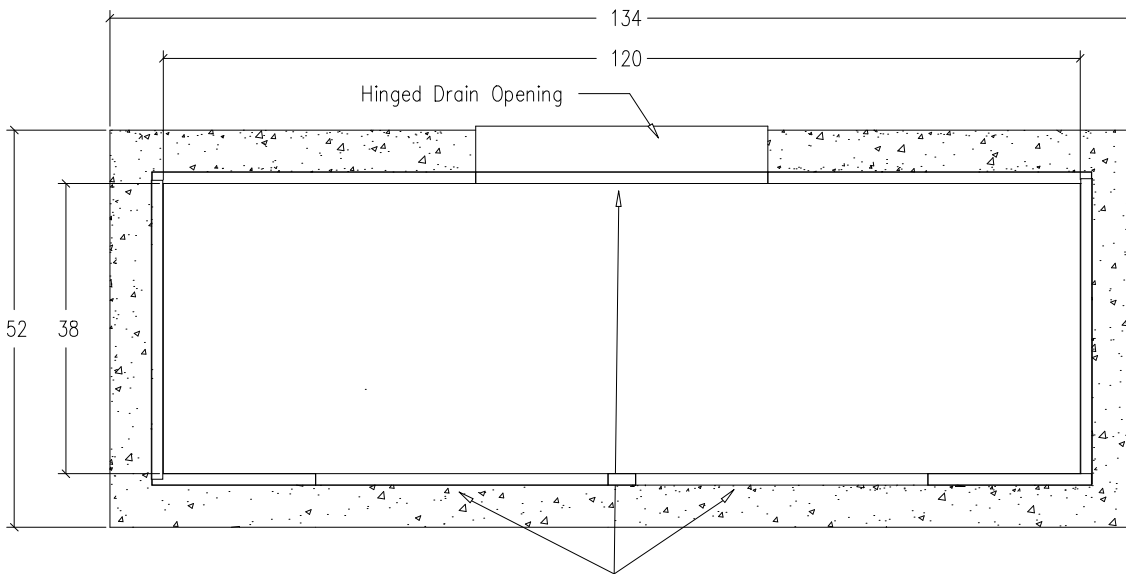
ELEVATION VIEW



FN: 800T

Sheet 1 of 1

PLAN VIEW



Removable Access Panel Openings
Three Openings: 38 1/4 x 80

6. HYDROCOWL MODEL 800T-AL ENCLOSURE.

7. Enclosure inside dimensions:
38"W x 120"L x 80"H

8. Concrete pad is 52"W x 134"L
9. BFP -

1. Drawing NOT TO SCALE.

2. BFP dimensions furnished by

3. All dimensions are in inches.

4. Wall and insulation thickness is 1-1/2".

5. Roof and insulation thickness is 3".