

ENCLOSURE MODEL: 800DS-AL

HYDROCOWL, INC.

JOB:

213 CRUTCHFIELD AVENUE, NASHVILLE, TN 37210

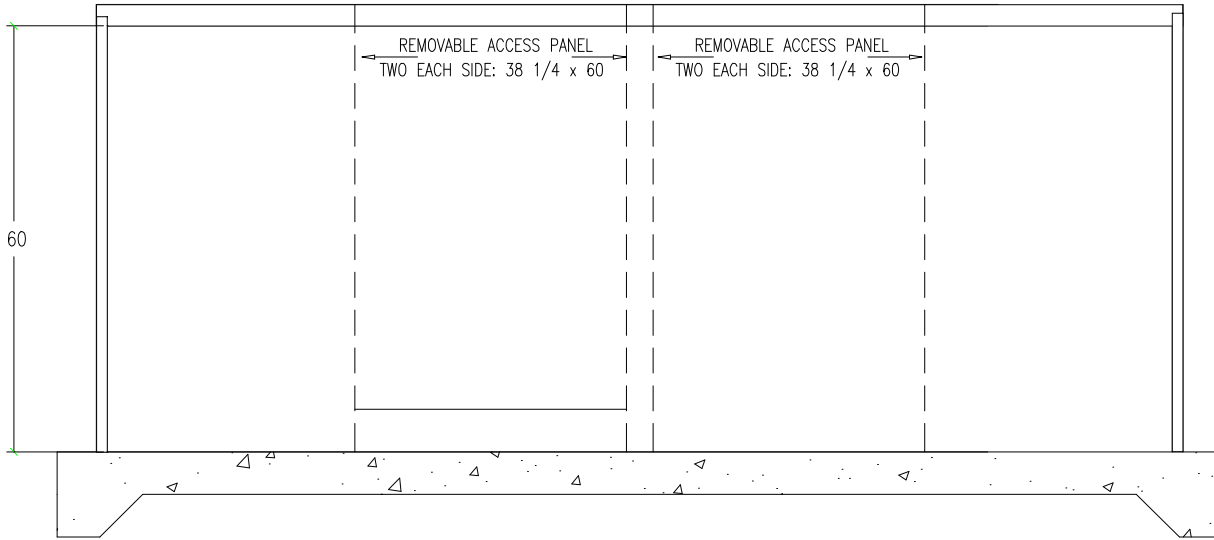
Drawn By: MW

Scale: NONE

Date:

615-259-4495, 800-245-6333, 615-259-4481 FAX

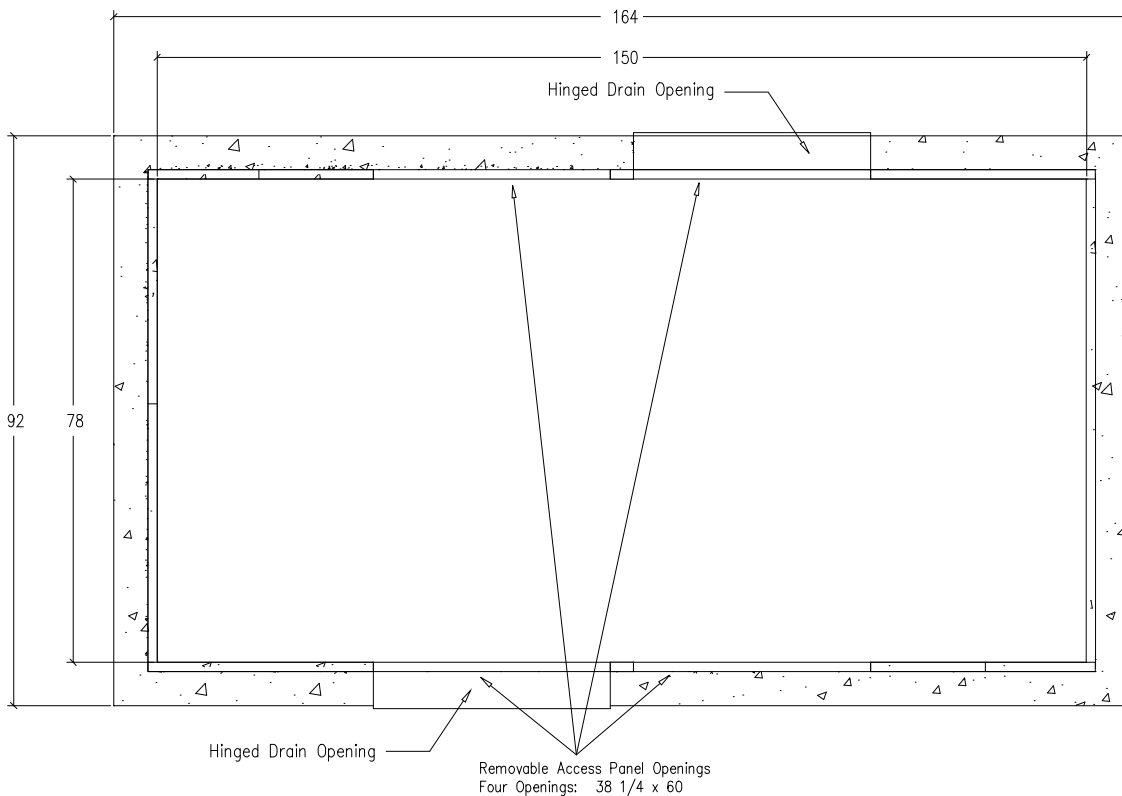
ELEVATION VIEW



FN: 800DS

Sheet 1 of 1

PLAN VIEW



6. HYDROCOWL MODEL 800DS-AL ENCLOSURE.

7. Enclosure inside dimensions:  
78"W x 150"L x 60"H

8. Concrete pad is 92"W x 164"L

9. BFP -

1. Drawing NOT TO SCALE.

2. BFP dimensions furnished by

3. All dimensions are in inches.

4. Wall and insulation thickness is 1-1/2".

5. Roof and insulation thickness is 3".