

ENCLOSURE MODEL: 800-AL

JOB:

Drawn By: MW

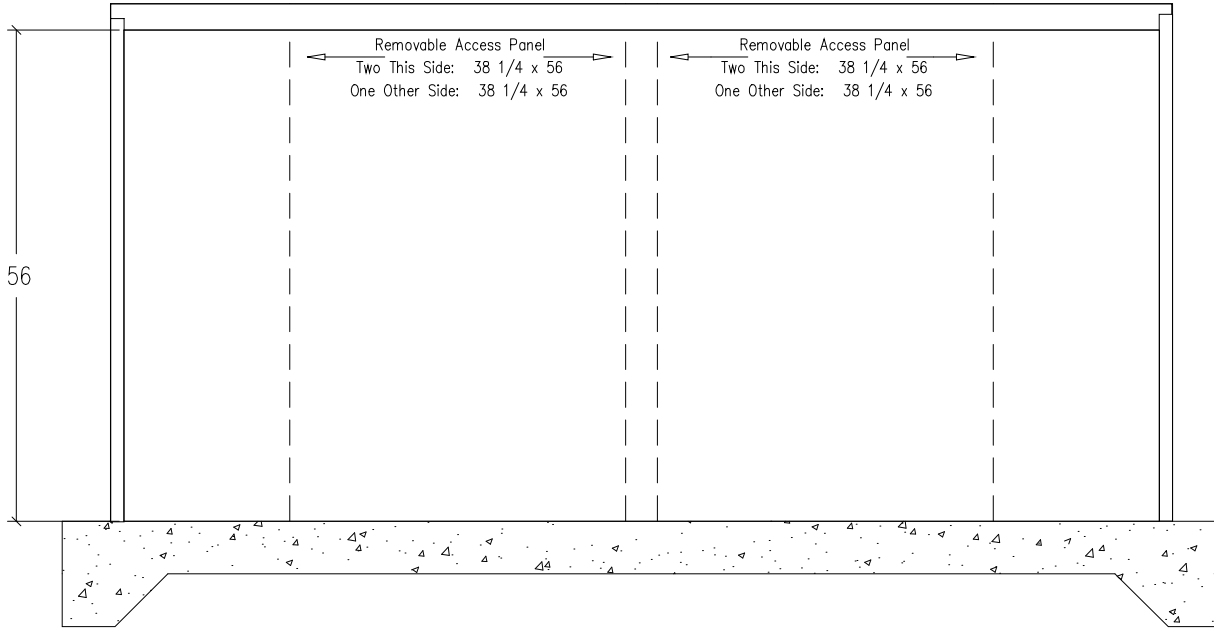
Scale: NONE

Date:

SAFE-T-COVER TM

BY: HYDROCOWL
213 CRUTCHFIELD AVENUE, NASHVILLE, TN 37210
615-259-4495, 800-245-6333, 615-259-4481 FAX

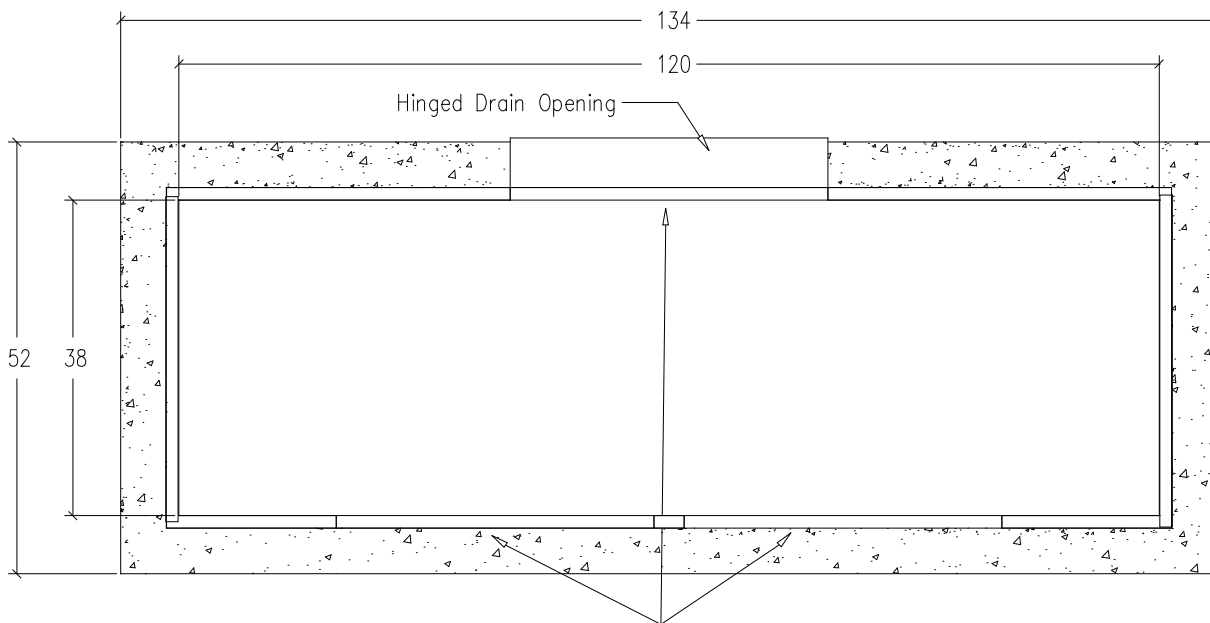
ELEVATION VIEW



FN: 800

Sheet 1 of 1

PLAN VIEW



Removable Access Panel Openings
Three Openings: 38 1/4 x 56

6. HYDROCOWL MODEL 800-AL ENCLOSURE.
 7. Enclosure inside dimensions:
38"W x 120"L x 56"H
 8. Concrete pad is 52"W x 134"L
 9. BFP -
1. Drawing NOT TO SCALE.
 2. BFP dimensions furnished by
 3. All dimensions are in inches.
 4. Wall and insulation thickness is 1-1/2".
 5. Roof and insulation thickness is 3".