

ENCLOSURE MODEL: 1000-AL

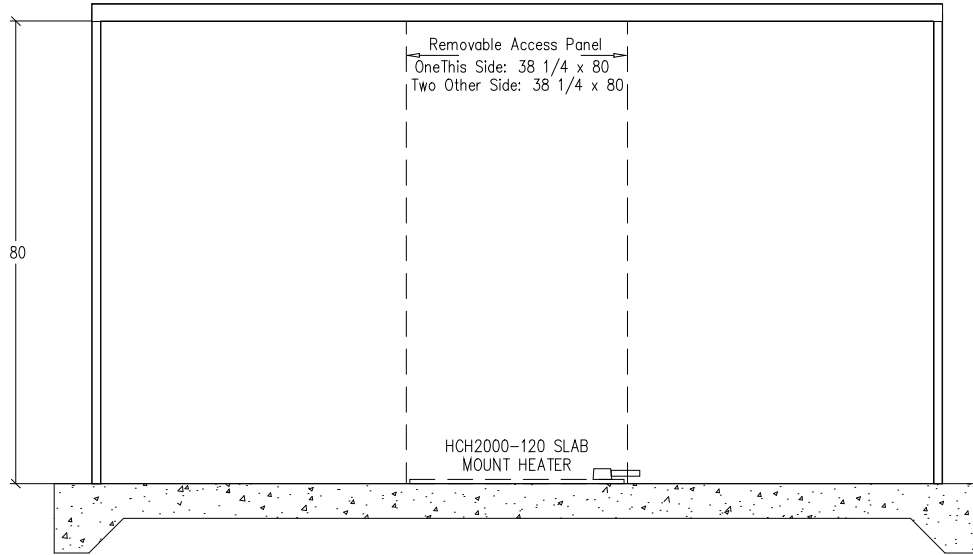
JOB:

Drawn By: MW | Scale: NONE | Date: 10-14-99

SAFE-T-COVER TM

BY: HYDROCOWL
2710 LANDERS AVENUE, NASHVILLE, TN 37211
615-259-4495, 800-245-6333, 615-259-4481 FAX

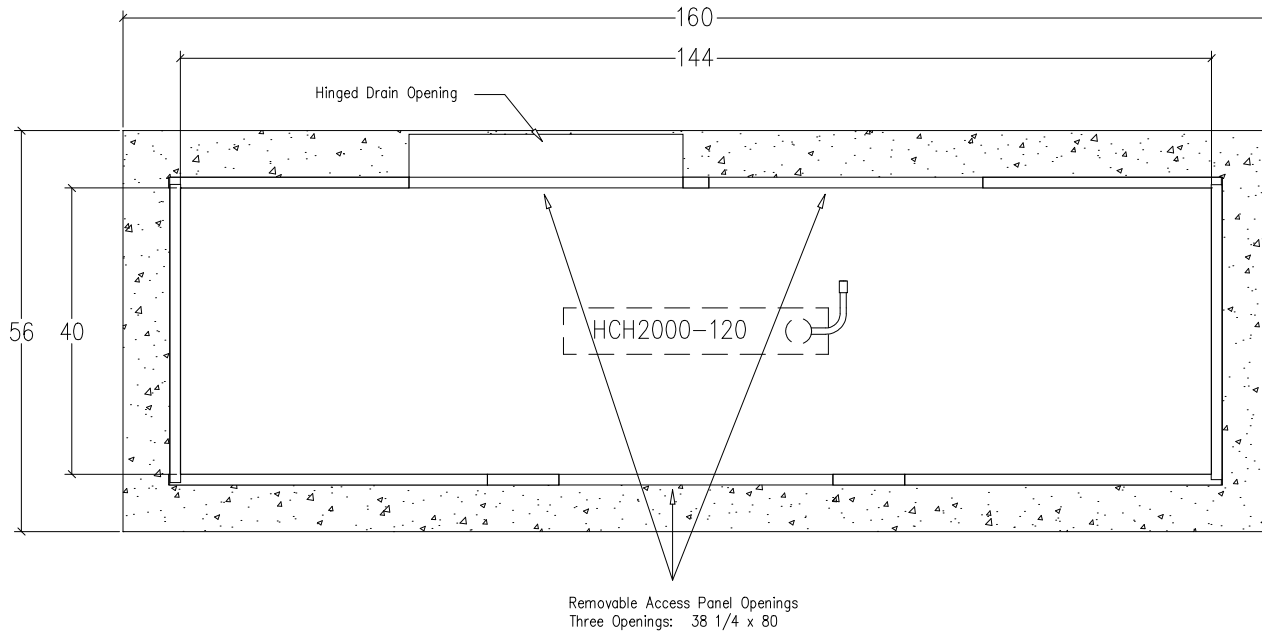
ELEVATION VIEW



FN: 1000-AL

Sheet 1 of 1

PLAN VIEW



- 6. MODEL 1000-AL ENCLOSURE.
- 7. Enclosure inside dimensions:
40"W x 144"L x 80"H
- 8. Concrete pad is 56"W x 160"L
- 9. BFP-

- 1. Drawing NOT TO SCALE.
- 2. BFP dimensions furnished by
- 3. All dimensions are in inches.
- 4. Wall and insulation thickness is 1-1/2".
- 5. Roof and insulation thickness is 3".

CONFIDENTIAL: This drawing is intended for use only by those authorized to receive it. Dissemination, distribution or copy of this information is strictly prohibited.